

Road 23 to Road 24

Distance: 14.6 miles.

Cell phone coverage: **Unknown**.

Contacts

Mount Adams Ranger District
Gifford Pinchot National Forest
2455 Highway 141

Trout Lake, WA 98650

Main office: 509-395-3400

Dean Robertson: 509-395-3484

Hours of operation (October 1 to June 1): Monday through Friday, 8:00am to 4:30pm

Hours of operation (June 1 to October 1): Monday through Sunday, 8:00am to 4:30pm

County Sheriff and Fire and Rescue: Skamania 509-427-9490

Trailheads

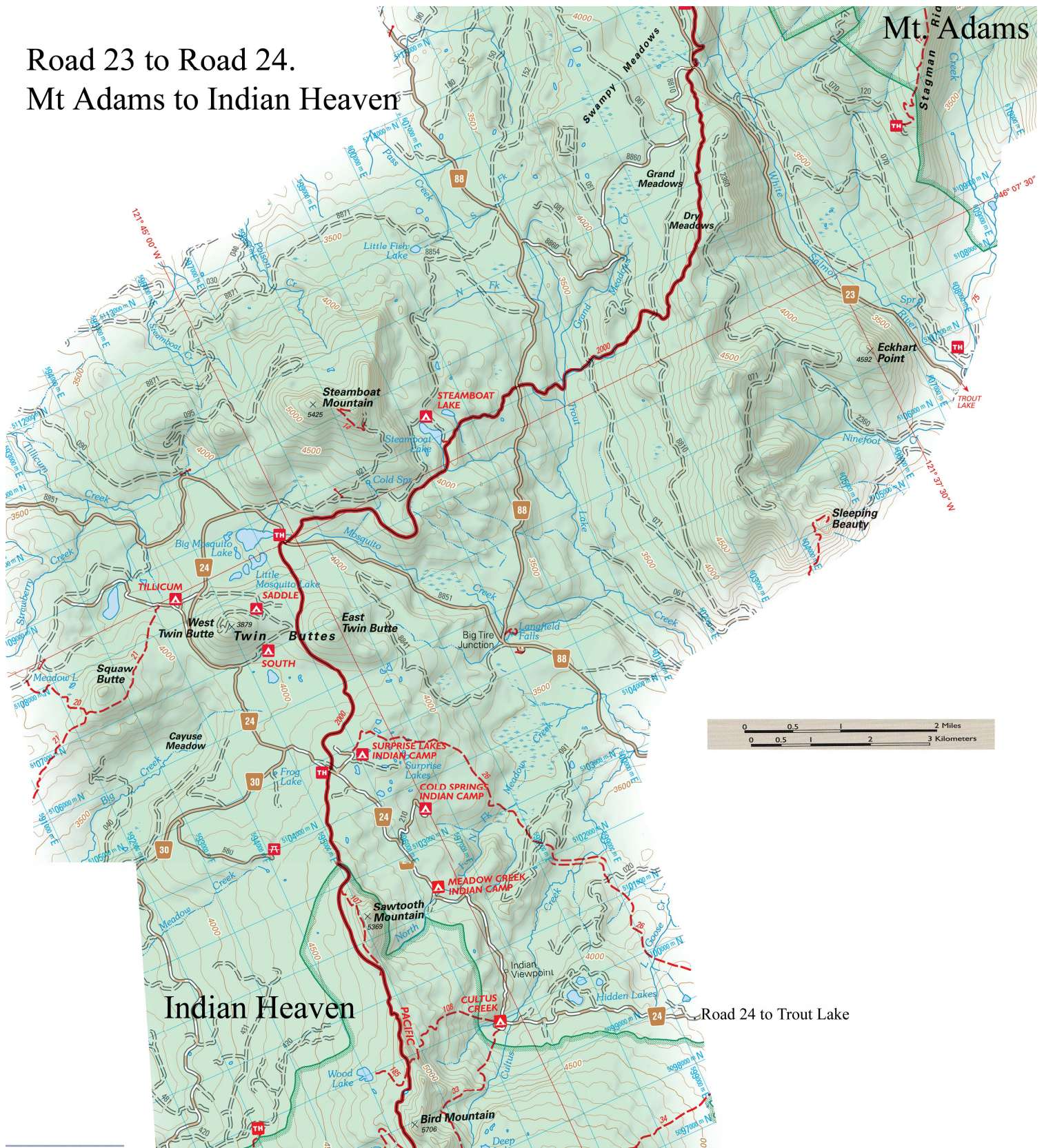
Location	Road 23 (south of Mount Adams)
GPS	Latitude: 46.1657N, Longitude: 121.6230W
TRS	Township: T8N, Range: R9E, Section S24
Directions	From Randle at Trout Lake, take FR 23 north for 14 miles.

Location	Road 88
GPS	
TRS	
Directions	

Location	Road 8851
GPS	
TRS	
Directions	

Location	Road 24 (north of Indian Heaven Wilderness)
GPS	Latitude: 46.0931N, Longitude: 121.7684W
TRS	Township: T7N, Range: R8E, Section S14
Directions	From Washington side of Bridge of the Gods, go east on Hwy 14 for 5.9 miles. Left through Carson on Hwy 30 for 14.5 miles. Right at pointer for Mt St Helens on Wind River Road for 15.8 miles. Near Lone Butte Snow Park, follow Sawtooth Berry Field sign on Road 30 for 7.9 miles to a T junction with Road 24. Right for 0.5 miles to trailhead.

Road 23 to Road 24. Mt Adams to Indian Heaven



Indian Heaven

Road 24 to Trout Lake