

# Lolo Pass to Timberline Lodge

Distance: 18.9 miles.

Cell phone coverage: **Unknown**.

## Contacts

### North of Top Spur

Hood River Ranger District  
Mount Hood National Forest  
6780 Highway 35  
Mount Hood-Parkdale, OR 97041  
Main office: 541-352-6002  
Ken Kollas: 541-352-6002 x685  
Sue Brun: 541-352-6002 x685

Hours of operation: Mon – Sat 8:00am – 4:30pm (closed 12:00pm – 12:30pm for lunch). Closed national holidays.

County Sheriff: Hood River 541-386-2098

Fire Rescue: Hood River 541-386-3939

### South of Top Spur

Zig Zag Ranger District  
Mount Hood National Forest  
70220 East Highway 26  
Zig Zag, OR 97049  
Main office: 503-622-3191

John Peterson: 503-622-3191 x648

Kathleen Walker: 503-622-3191 x641

Hours of operation: Mon – Sun 7:45am – 4:30pm (closed 12:00pm – 1:00pm for lunch).

County Sheriff: Clackamas 503-655-8211

Fire Rescue: Clackamas (Hoodland) 503-622-3256

Urgent care: Gresham Urgent Care, 2850 SE Powell, 503-666-5050, 8:00am to 9:00pm daily.

From Zig Zag head west on Hwy 26 for 30 miles to intersection of Powell and Hwy 26. On the left is Gresham Urgent Care Clinic.

## Trailheads

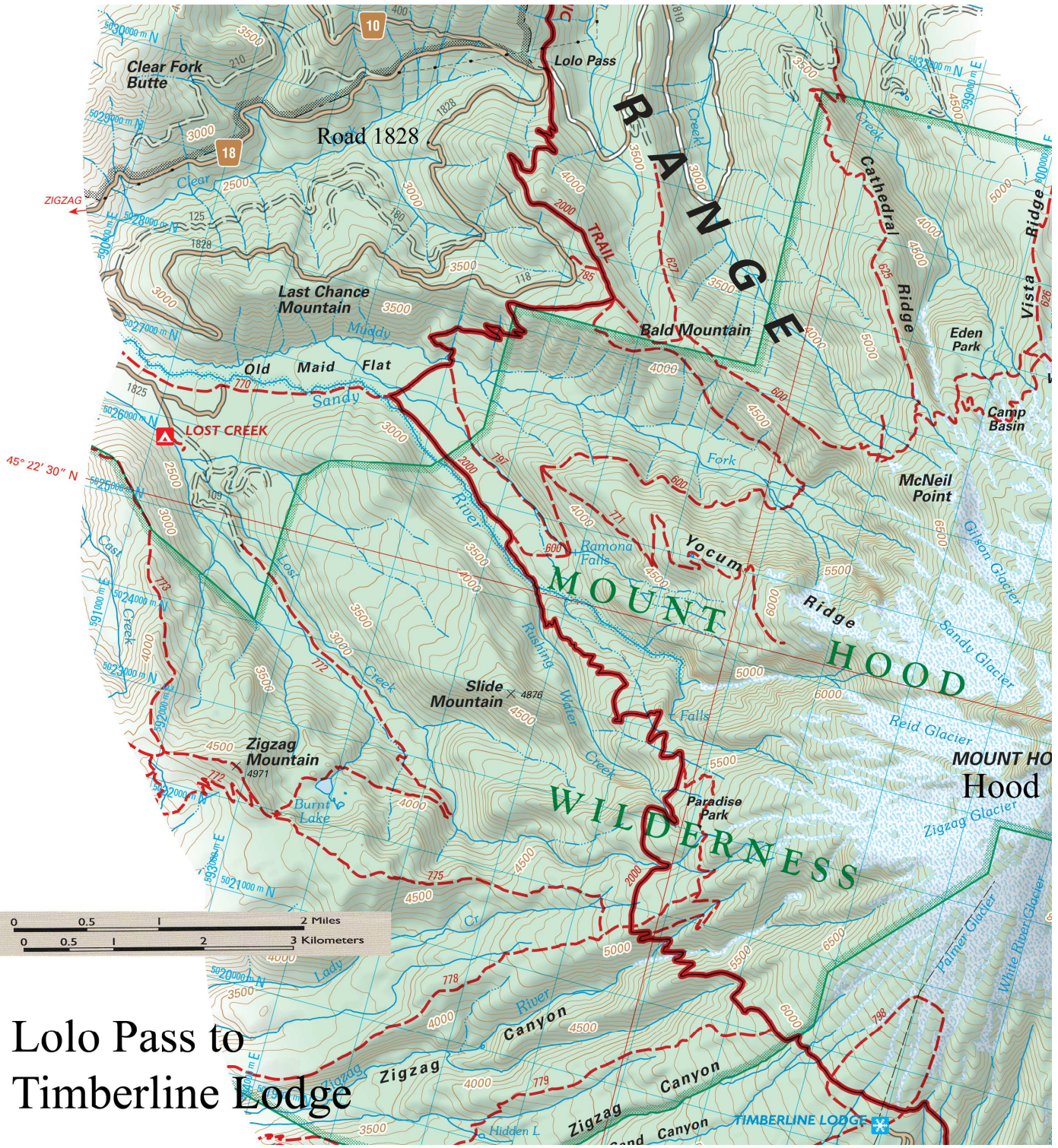
<b>Location</b>	Lolo Pass
<b>GPS</b>	Latitude: 45.4267N, Longitude: 121.7959W
<b>TRS</b>	Township: T2S, Range: R8E, Section S2
<b>Directions</b>	Take Hwy 26 42 miles east from Portland, turn Left at Zig Zag store (or successor). Follow East Lolo Pass Road 18 for 10.5 miles to Lolo Pass.

<b>Location</b>	Top Spur
<b>GPS</b>	Latitude: 45.4074N, Longitude: 121.7858W
<b>TRS</b>	Township: T2S, Range: R8E, Section S11
<b>Directions</b>	Take Hwy 26 42 miles east from Portland, turn Left at Zig Zag store (or successor) onto East Lolo Pass Road. After 4.2 miles fork right onto paved road 1825. After 0.7 miles, just before a bridge, go straight on unsigned, one lane paved road 1828. Continue 5.6 miles and fork to right on gravel road 118 for 1.5 miles to Top Spur Trailhead.

<b>Location</b>	Ramona Falls in Old Maid Flats
<b>GPS</b>	Latitude: 45.3981N, Longitude: 121.7896W
<b>TRS</b>	Township: T2S, Range: R8E, Section S15
<b>Directions</b>	Take Hwy 26 42 miles east from Portland, turn Left at Zig Zag store (or successor) onto East Lolo Pass Road. After 4.2 miles fork right onto paved road 1825. After 0.7 miles turn right across Sandy River Bridge. Continue 1.8 miles on road 1825 and then fork left onto road 100 for 0.5 miles to large parking area at the road's end.

<b>Location</b>	Timberline Lodge
<b>GPS</b>	Latitude: 45.3309N, Longitude: 121.7115W
<b>TRS</b>	Township: T3S, Range: R9E, Section S6
<b>Directions</b>	Hwy 26 to Government Camp. The road to Timberline Lodge turns left about 200 yards after the far end of the village.





Lolo Pass to  
Timberline Lodge